

**Rhino for Architecture
15-16 June 2015 in Vienna
OUTLINE PROGRAMME**

Tutors:
Vincent Nowak (Flow Architecture)
Annarita Papeschi (Zaha Hadid Architects)
Organised by:
BüroWHAT!

DAY 1

9.30 – 10.00: **Introduction and Course Outline**

The workshop will examine in detail different uses of Rhino along the process of architectural production, from concept development till construction documentation. Starting with an overview of Rhino as an all-around tool for conceptualizing and developing architectural models, the class will then illustrate the potential of the software for geometry control, rationalization and the coordination of information across the design team. Further options for documentation production, visualization, and interoperability with other software will be illustrated. Each subject will be tackled through the step-by-step development of examples and case studies analysing in detail key commands and critical workflows.

10.00 – 11.15: **Rhino Refresher**

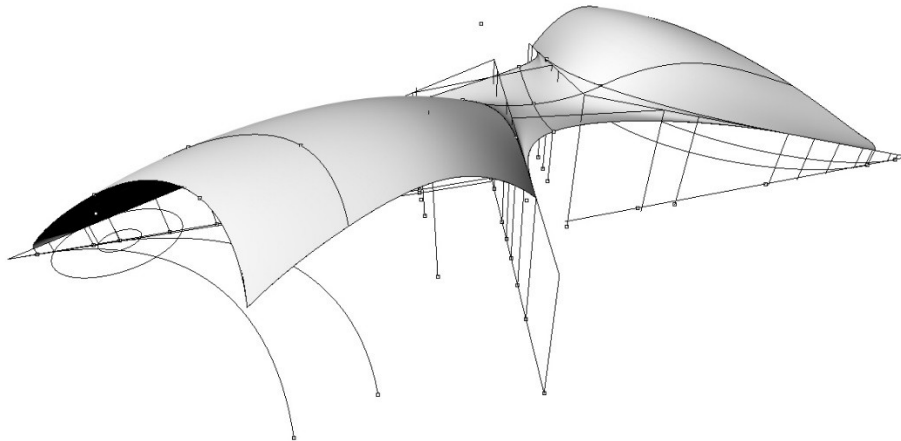
A brief overview of critical settings and key functions.

11.15-11.30 **Coffee Break**

11.30-13.00: **Conceptual modelling**

An overview of key 2D and 3D modelling workflows.

Reference: Mediatheque Intercommunale Pau (ZHA), Opus Office Tower (ZHA)



13.00-14.00: **Lunch Break**

14.00-15.45: **Hands-on Exercise: Concept Modelling Office Tower**

15.45-16.00: **Coffee Break**

16.00-17.30: **Rhino for Architectural Documentation**

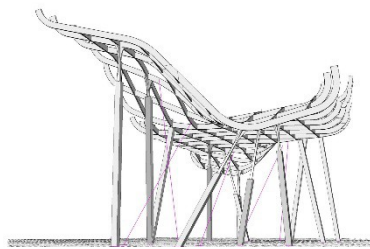
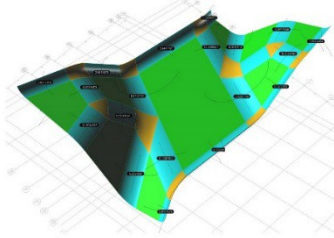
An overview of the powerful and flexible 2D functions of Rhino.

DAY 2

9.30 – 11.00: Rationalisation & Parametric Techniques in Rhino

The control of areas, quantities, volumes and geometries represents an obligation during design development that often requires the elaboration of a basic parametric logic. After introducing the foundation of its implementation in Rhino, the session will cover techniques for coordination with the design team and interoperability with other architectural software.

Reference: d'Leedon Singapore (ZHA), Milan Office Tower (ZHA)



11.00-11.15: Coffee Break

11.15-13.00: Hands-on Exercise

13.00-14.00: Lunch Break

14.00-15.00: Prototyping in Rhino

The session will illustrate the workflows for the production of 3D models and prototypes.

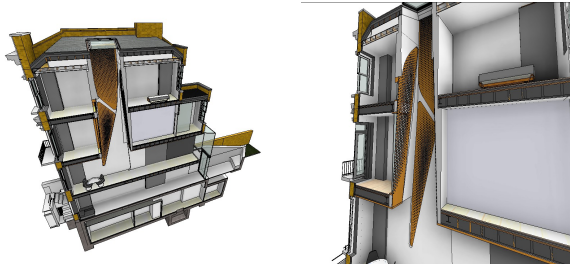
Examples: DRL X Pavillion, London (SDA)

15.00-15.15: Coffee Break

15.15-16.30: Rhino and BIM (Revit)

This session will take a view on how to combine Rhino with a BIM compatible workflow.

Examples: YOC Nanjing (ZHA), 72 Scarsdale Villas (Flow)



16.30-17.00: Rhino for Visualisation

Production of visual documentation and introduction to cloud based render engines.



17.00-17.30: Question and Answer