

FLOW Architecture is a London based architecture, design and research practice. It was founded by Annarita Papeschi and Vincent Nowak in 2013.

At the heart of the office agenda lies the commitment to develop unique and contemporary designs. The office studies the transformation of space and geometry in relation to its functional requirements. Inspired by the dynamism and complexity of natural organisations, the key feature of our designs is the search for continuity and diversity within a special spatial arrangement. The design process follows an evolutionary pattern, where ideas are gradually refined and developed until they reach their final form. This process ensures tailored and holistic design solutions that meet client expectations for functionality and outstanding design.

The practice uses the vast possibilities that contemporary computational tools offer. Next to the BIM compliant work-flow, we use cutting-edge digital tools to generate design and explore fabrication techniques. The office digital work-flow guarantees higher productivity and flexibility and allows for the management of large projects with tight deadlines by keeping high quality standards.

As an extension of the architectural work, the office is also involved in bespoke furniture and product design. The small scale designs, developed in close collaboration with high-end manufacturers, explore the boundaries of digital design to fabrication and constitute the ideal basis to conceptually investigate architectural ideas, test materials and production techniques.

The practice is currently involved in the complete renovation and refurbishment of a Victorian end of terrace house in Kensington.

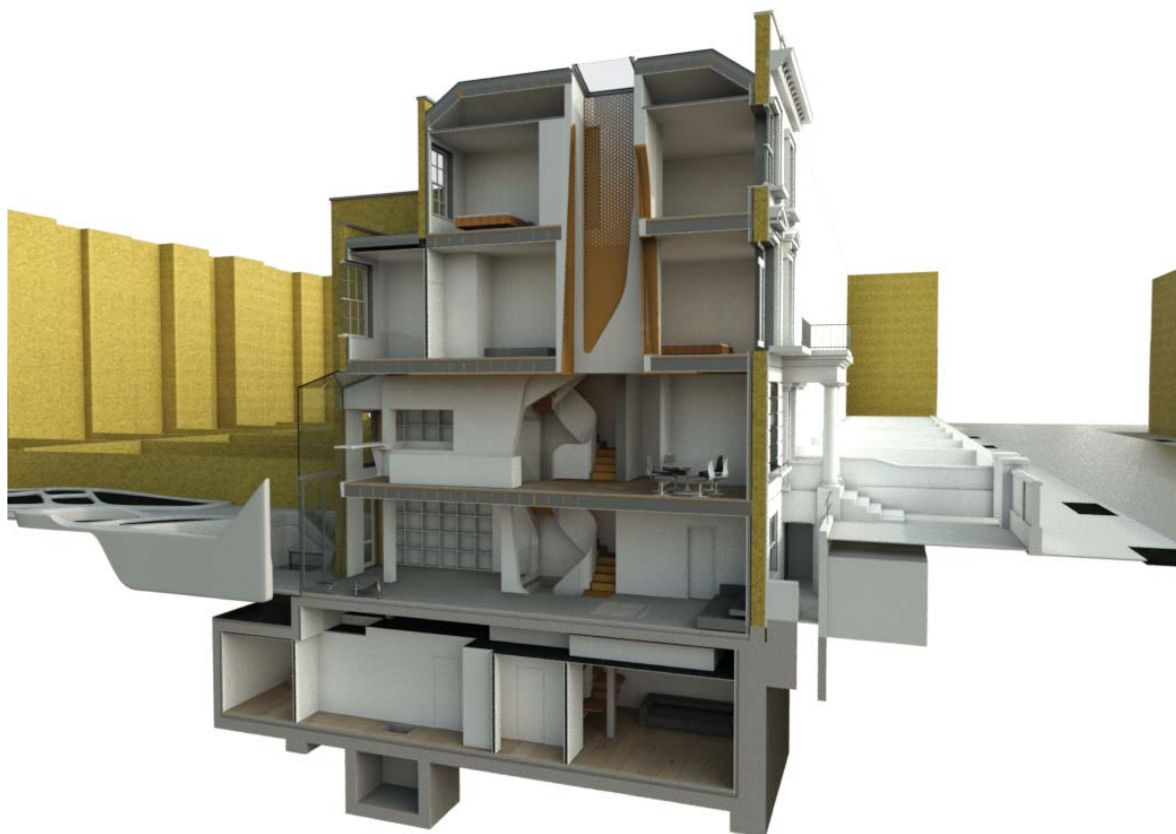
Flow Architecture Ltd.  
Flat 8, Regency Court  
Park Close  
E9 7TP, London

Vincent Nowak  
Director & Co-Founder  
phone: 07834336356  
email: [vincent.n@flowarchitecture.net](mailto:vincent.n@flowarchitecture.net)

Company registered in England, No. 8516344

# flow ARCHITECTURE

SCARSDALE VILLAS, W8



3d Section showing the Inner Courtyard

The project for 72 Scarsdale Villas consists in the renovation and extension of a Victorian end of terrace house in Kensington, including the demolition and reconstruction of the rear facade, the construction of a basement and a contemporary new living space extended into the garden. The existing interior layout is entirely replaced by a generous arrangement of the spaces. The dwelling is not listed, but located in the historic conservation area of Abingdon.

The internal organisation of the house revolves around an interior courtyard that acts as a visual centre to the living spaces. The sculptural treatment of the inner courtyard opens up new spectacular visual connections within the house. In addition, the inner courtyard distributes the light entering from a series of new large windows opened in the roof and in the side facade.

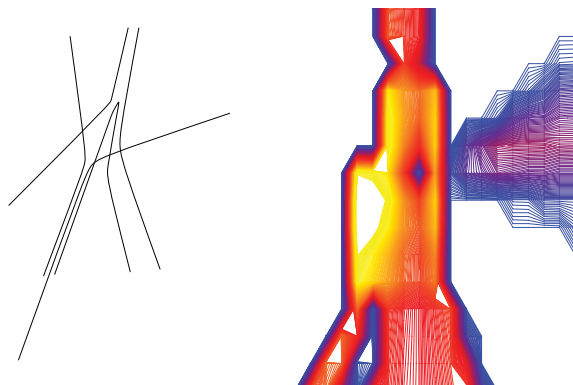
The rear features a brick screen facade fixed in front of a floor-to-floor glazing. The large glazing ensures bright interiors whereas the brick screen allows the rear facade to blend into the historic texture of its surroundings.

The garden extension creates a double height dining room with direct access to the garden through a large pivoting door.

Garden, dining room, living room, inner courtyard and kitchen are forms a spatial arrangement that replaces the old, dark and narrow plan with a modern, light and generous arrangement whilst respecting the historic character of the location.



View of the Inner Courtyard and skylight



Conceptual studies

**flow** ARCHITECTURE  
SCARSDALE VILLAS, W8



Interior View: Kitchen and Dining



Interior View: Kitchen, Lower Ground Floor



Interior View: Staircase

**flow ARCHITECTURE**  
CLIFTON COURT, NW8



Master bathroom



Open plan living space

The project consists of a luxury refurbishment of a 90 m<sup>2</sup> flat located at the top of a three storeys 30s block in Maida Vale (NW8).

The design was developed in close interaction with the client and his wish for a large open plan reception area was put into reality with the alteration of the existing structural layout and the implementation of the latest fire control technologies. The master bathroom was relocated, enlarged and refurbished to top-end standards. The project was entirely specified and tendered to ensure that the highest quality was reached at a competitive price.

Vincent studied architecture and obtained his Diploma at the RWTH Aachen (Germany) in the department of Prof. Vladimir NIKOLIC in 2004 which included an Erasmus grant at "L'Ecole nationale supérieure d'architecture Paris-Malaquais" (2001/2002). During his time as student, he gained first professional experience at the offices of Jean Nouvel in Paris and Gerkan, Marg und Partner (gmp) in Aachen.

He joined Zaha Hadid Architects in 2004 and as Lead Architect led a number of high rise projects in the in the Middle East and China. Vincent was in charge of design and development of the iconic 'OPUS Office Tower', the flagship building for one of Dubai's leading private developers. He led the project from competition to tender, and the tower is currently under construction. Furthermore, he was Project Architect for the 'I Tower' and 'DMC Tower' in Dubai and led the competition team for the Federal National Council in Abu Dhabi. More recently he has been Project Architect of the Youth Olympic Centre in Nanjing, China. The 500.000 sqm mixed used development is composed of two high-rise hotel/office towers, a conference centre and a retail building. The project is currently under construction and completion is scheduled for 2015.

Vincent Nowak is a specialist in high-rise building design, Building Information Modelling (BIM) and computational design. He co-founded Flow Architecture Ltd. in May 2013 and is currently working on the refurbishment of a residential property in Kensington. Vincent Nowak is a registered architect at the German Board of Architects, Architektenkammer NRW and the ARB, the Architects Registration Board in UK.

## Memberships & Qualifications

- Architectural Registration Board (UK)- ARB, Member since November 2012
- Architektenkammer NRW (D)- AKNRW, Member since 2009

## Professional Experience

### May 2013 - ongoing:

Director and Co-founder at Flow Architecture, London

- 2013-ongoing: 72 Scarsdale Villas  
Refurbishment and extension of a Victorian House in Kensington, Gross Area: 250 sqm  
Concept, Schematic Design, DD, Tender, CD  
Project Architect

### September 2004 - December 2012:

Lead Architect at Zaha Hadid Architects, London ([www.zaha-hadid.com](http://www.zaha-hadid.com))

- 2012: YOC Nanjing (CN)  
Mixed-use Development, Gross Area: 500.000 sqm  
Concept Design, Schematic Design, Tender Documents  
Project Architect

- 2011: Culenova, Bratislava (SR)  
Masterplan and Office Tower, Gross Area: 30.000 sqm  
Schematic Design  
Senior Architect

- 2010: FNC (Federal National Council), Abu Dhabi (UAE)  
New Parliament of the UAE, Gross Area: 80.000 sqm  
Competition (2 stages)  
Project Architect

- 2008-2011: Eleftheria Square, Nicosia (CY)  
Masterplan, Gross Area: 42.500 sqm  
Detail Design and Tender Documentation  
Senior Architect

- 2006-2010: Opus Office Tower, Dubai (UAE)  
Office Tower, Retail and Parking, Gross Area: 160.000 sqm  
Competition, Concept Design, Schematic Design, Design Development, Tender Documents and Artistic Supervision  
Project Architect

- 2006: I Tower, Dubai, (UAE)  
Residential Tower, Gross Area: 80.000m<sup>2</sup>  
Concept Design, Schematic Design  
Project Architect

- 2004-2006: MIDR, Pau (FR)  
Communal library in France, Gross Area: 6.000 m<sup>2</sup>  
Esquisse, APS, ADP  
Architectural Assistant

### March to August 2004:

Architectural Assistant at JSWD Architekten, Cologne ([www.jswd-architekten.de](http://www.jswd-architekten.de))

- IKBB Bonn, Competition
- Halle 11, Rheinauhafen Koeln, Schematic Design

### March to August 2002:

Internship at Jacques Moussafir Architectes Associes, Paris ([www.moussafir.fr](http://www.moussafir.fr))

- Gymnase + Espace jeunes, Paris Porte d'Asnières, Competition
- Centre Europeen de musique de chambre, Fontainebleau, Competition
- Restructuration de l'aile administrative de l'ENSAV, Versailles, Competition

### October 2001 to February 2002:

Internship at Ateliers Jean Nouvel, Paris ([www.jeannouvel.com](http://www.jeannouvel.com))

- Lee-Um Samsung, Museum of Art, Seoul, Schematic Design
- Stade Grimonprez, Lille, Competition

### January to August 2001:

Architectural Assistant at von Gerkan, Marg und Partner (GMP), Aachen ([www.gmp-architekten.de](http://www.gmp-architekten.de))

- Alltours Bürogebäude, Duisburg, Construction Documents

### October 1999 to February 2001:

Internship at Kaspar Kraemer Architekten, Cologne ([www.kaspar-kraemer.de](http://www.kaspar-kraemer.de))

- Bürogebäude Gustav-Heinemann-Ufer, Köln, Competition
- Büropark an der Gruga, Planning Application

## Education

- 2004: Diploma in Architecture at the RWTH Aachen (D)
- 2001-2002: Erasmus Studies in Paris, Ecole d'Architecture Paris- Malaquais, France
- 1997-2004: Studies of Architecture the RWTH Aachen (D)

**flow** ARCHITECTURE  
VINCENT NOWAK

Exhibition stand - Uhrenmuseum STOWA, competition (Special Mention)



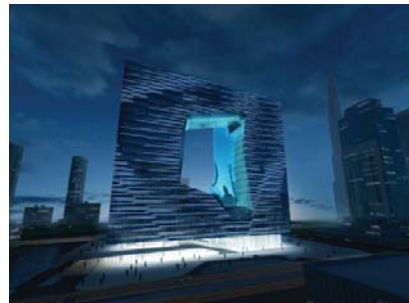
The Opus Office Tower, Dubai (Zaha Hadid Architects)



The Opus: front view



The Opus: construction site 2015



The Opus: night-time impression



The Opus: view on the Retail Area

**flow ARCHITECTURE**  
VINCENT NOWAK

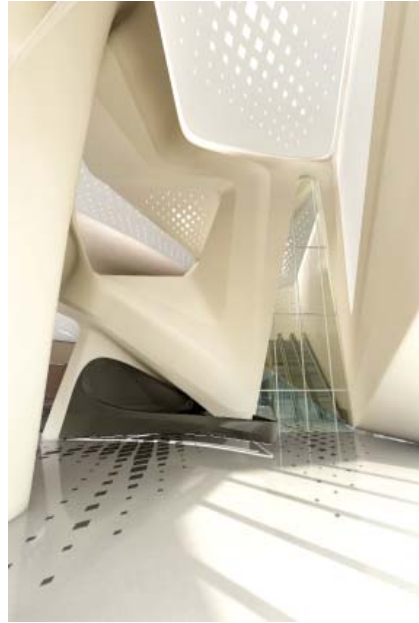
Youth Olympic Centre (YOC), Nanjing (Zaha Hadid Architects)



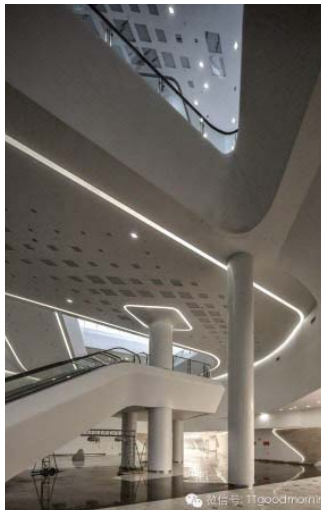
YOC: night-time impression



YOC: aerial view



YOC: Main Lobby



YOC: completion

